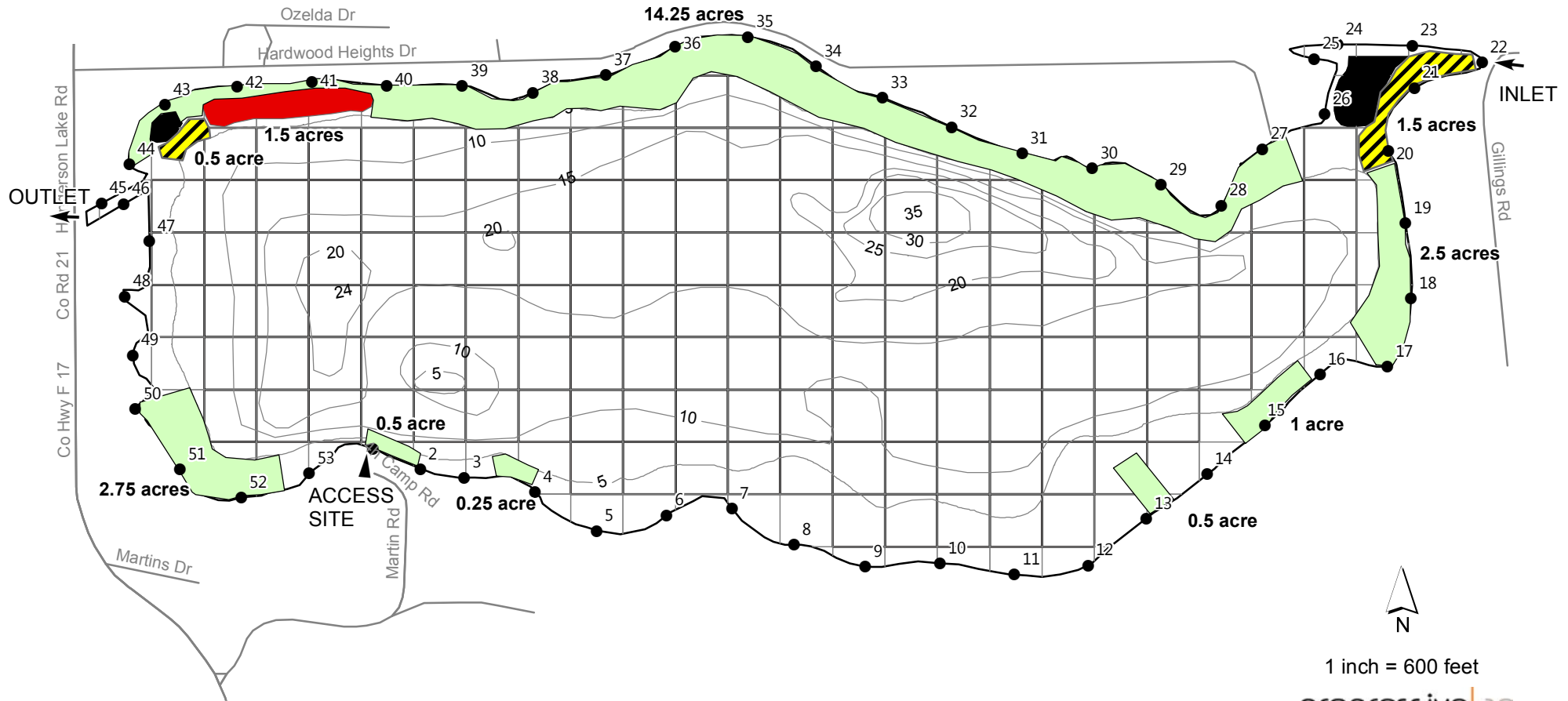


# HARDWOOD LAKE OGEMAW COUNTY, MICHIGAN MAY 17, 2018 TREATMENT MAP

□ = 1 ACRE

## Treatment

- Algae = 21.75 acres of nuisance algae w/CuSO<sub>4</sub>
- Clipper/Aquathol-K = 2 acres of mixed exotics w/flumioxazin @ 100 ppb tank-mixed w/Aquathol-K
- Triclopyr Dry = 1.5 acres of non-native milfiol w/Navitrol granular @ 200 lbs./acre



TOTAL LAKE AREA = 182 ACRES  
 REVISION DATE: FEBRUARY, 2018  
 DEPTH CONTOUR SOURCE - MICHIGAN CONSERVATION DEPARTMENT 1943.

progressive|ae

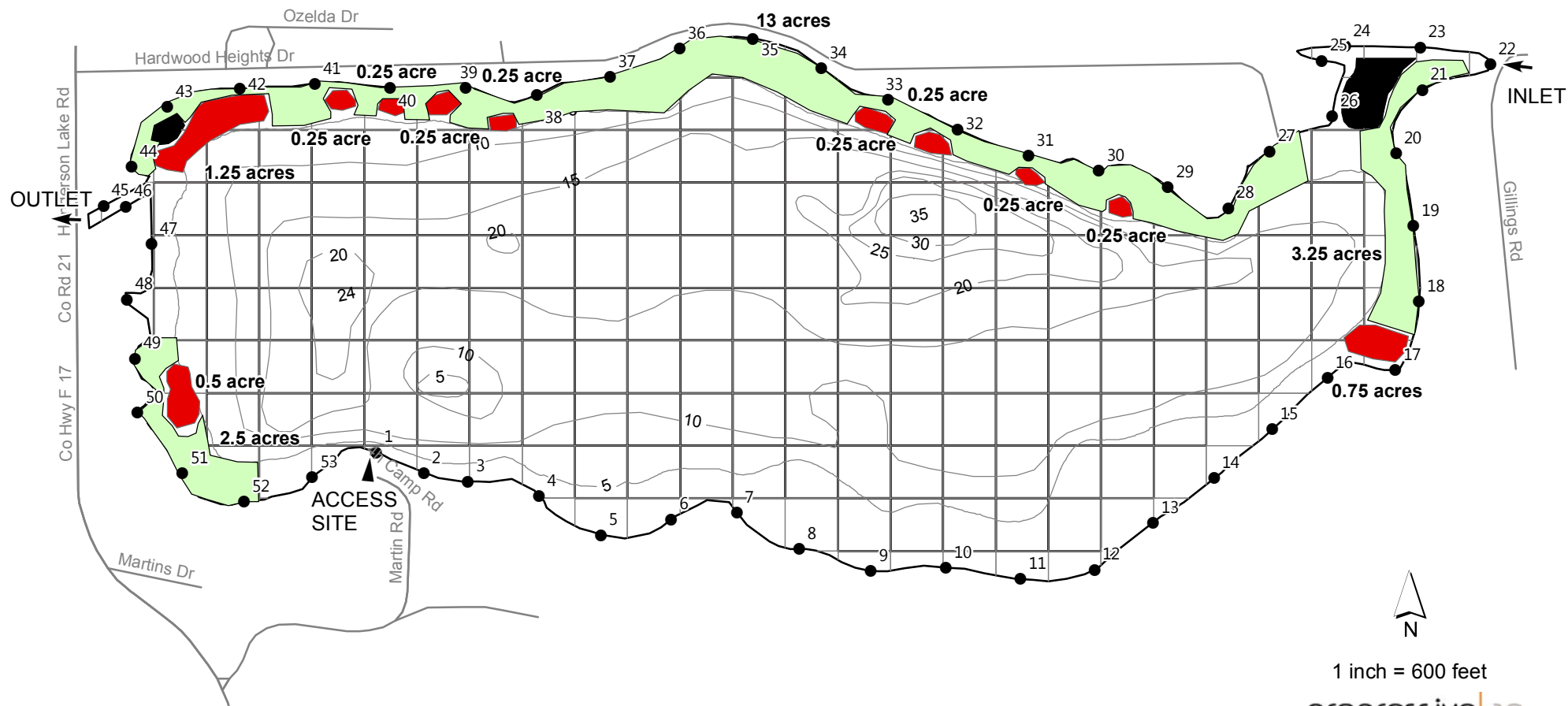
# HARDWOOD LAKE OGEMAW COUNTY, MICHIGAN JUNE 14, 2018 TREATMENT MAP

☐ = 1 ACRE

## Treatment

Algae = 18.75 acres of nuisance filamentous algae w/CuSO<sub>4</sub>

Triclopyr Dry = 4.5 acres of non-native milfoil w/Navitrol granular at 200 lbs./acre



1 inch = 600 feet

progressive|ae

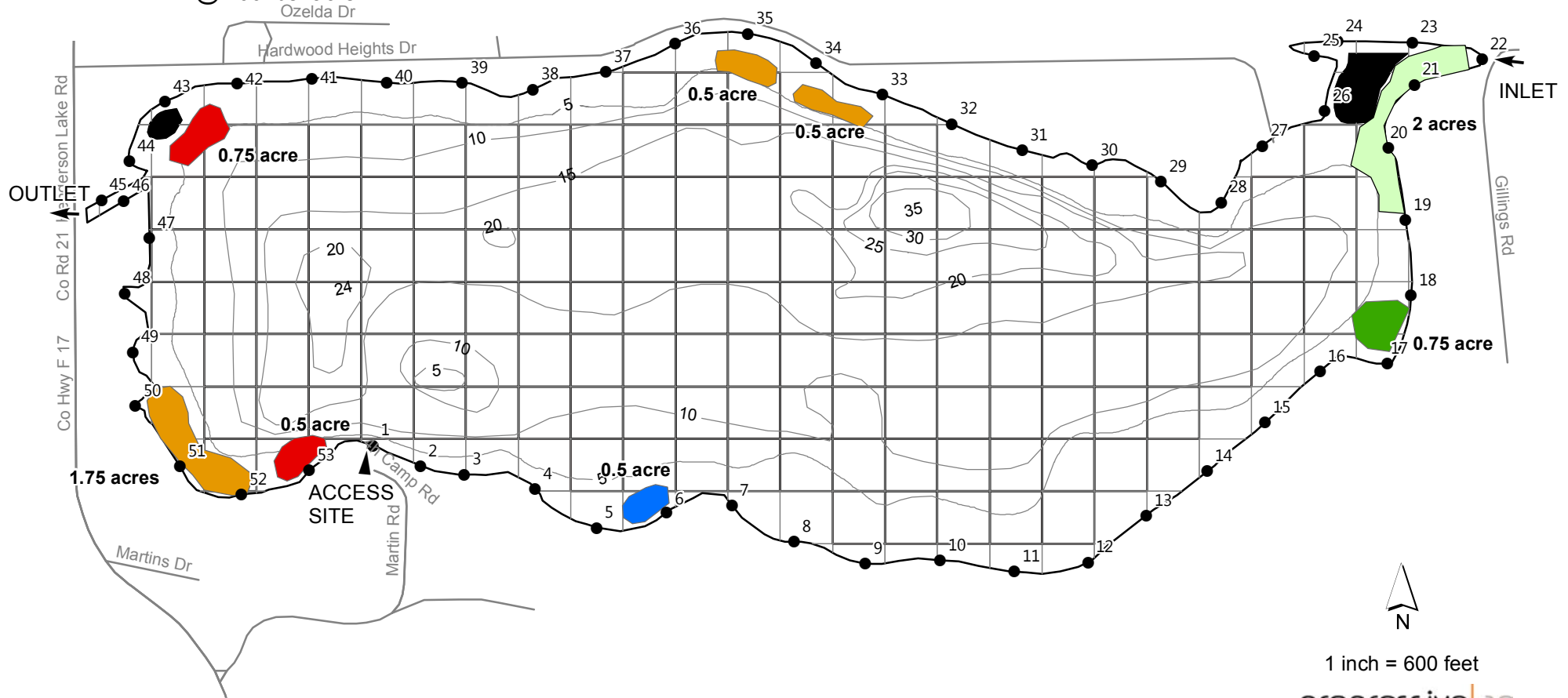
TOTAL LAKE AREA = 182 ACRES  
 REVISION DATE: FEBRUARY, 2018  
 DEPTH CONTOUR SOURCE - MICHIGAN CONSERVATION DEPARTMENT 1943.

# HARDWOOD LAKE OGEMAW COUNTY, MICHIGAN JULY 12, 2018 TREATMENT MAP

□ = 1 ACRE

## Treatment

- 2,4-D Ester = 0.5 acre of non-native milfoil w/Navigate @ 150 lbs./acre
- Diquat Exotics = 2.75 acres of non-native milfoil w/diquat-dibromide
- Algae = 2 acres of nuisance filamentous algae w/CuSO4
- Triclopyr Dry = 1.25 acres of non-native milfoil w/Navitrol granular @ 200 lbs./acre
- Chelated Copper Granular = 0.75 acre of nuisance wild celery w/Harpoon granular @ 200 lbs./acre




TOTAL LAKE AREA = 182 ACRES  
 REVISION DATE: FEBRUARY, 2018  
 DEPTH CONTOUR SOURCE - MICHIGAN CONSERVATION DEPARTMENT 1943.

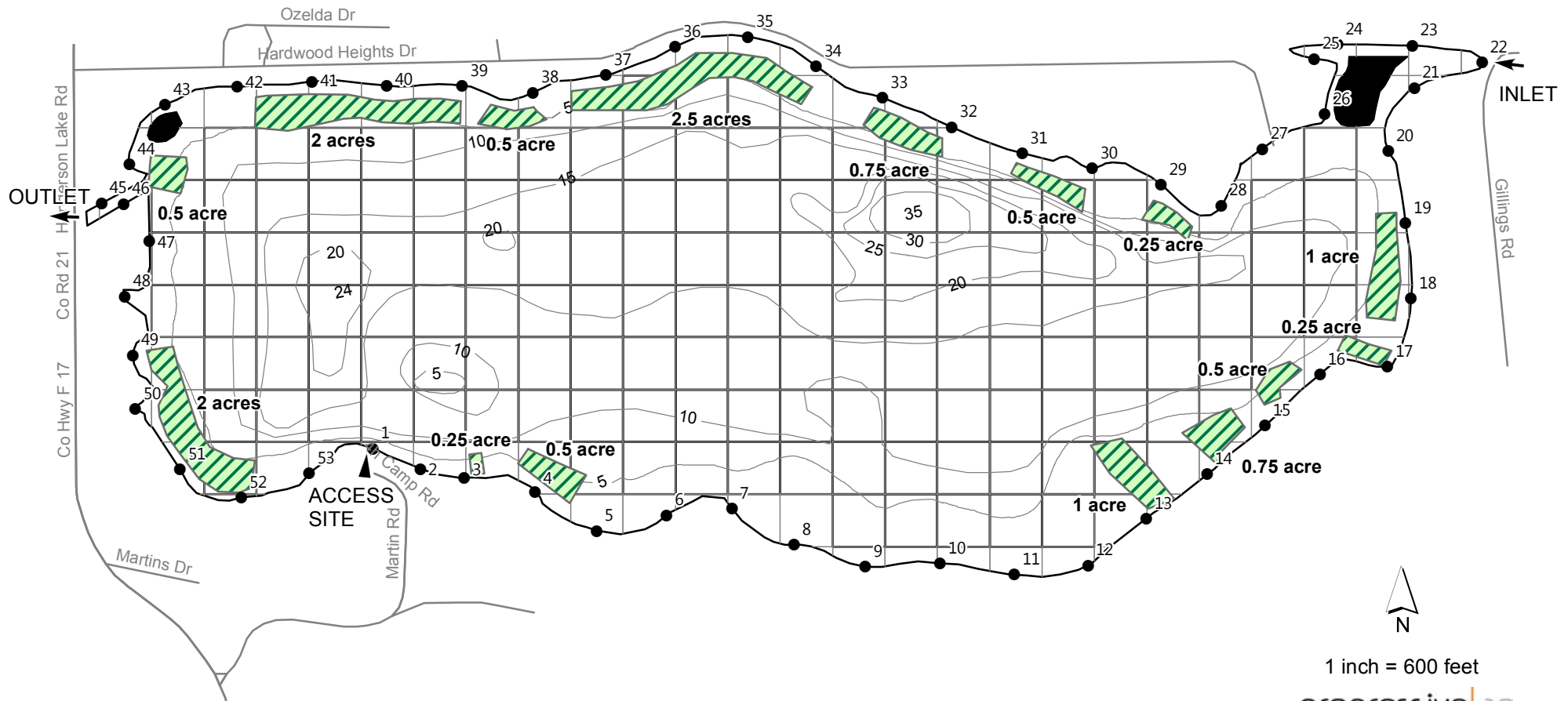
1 inch = 600 feet  
 progressive|ae

# HARDWOOD LAKE OGEMAW COUNTY, MICHIGAN JULY 12, 2018 HARVEST MAP

□ = 1 ACRE

## Harvesting Areas

 Harvesting = 13.25 acres of primarily pondweeds and lily pads



TOTAL LAKE AREA = 182 ACRES  
 REVISION DATE: FEBRUARY, 2018  
 DEPTH CONTOUR SOURCE - MICHIGAN CONSERVATION DEPARTMENT 1943.

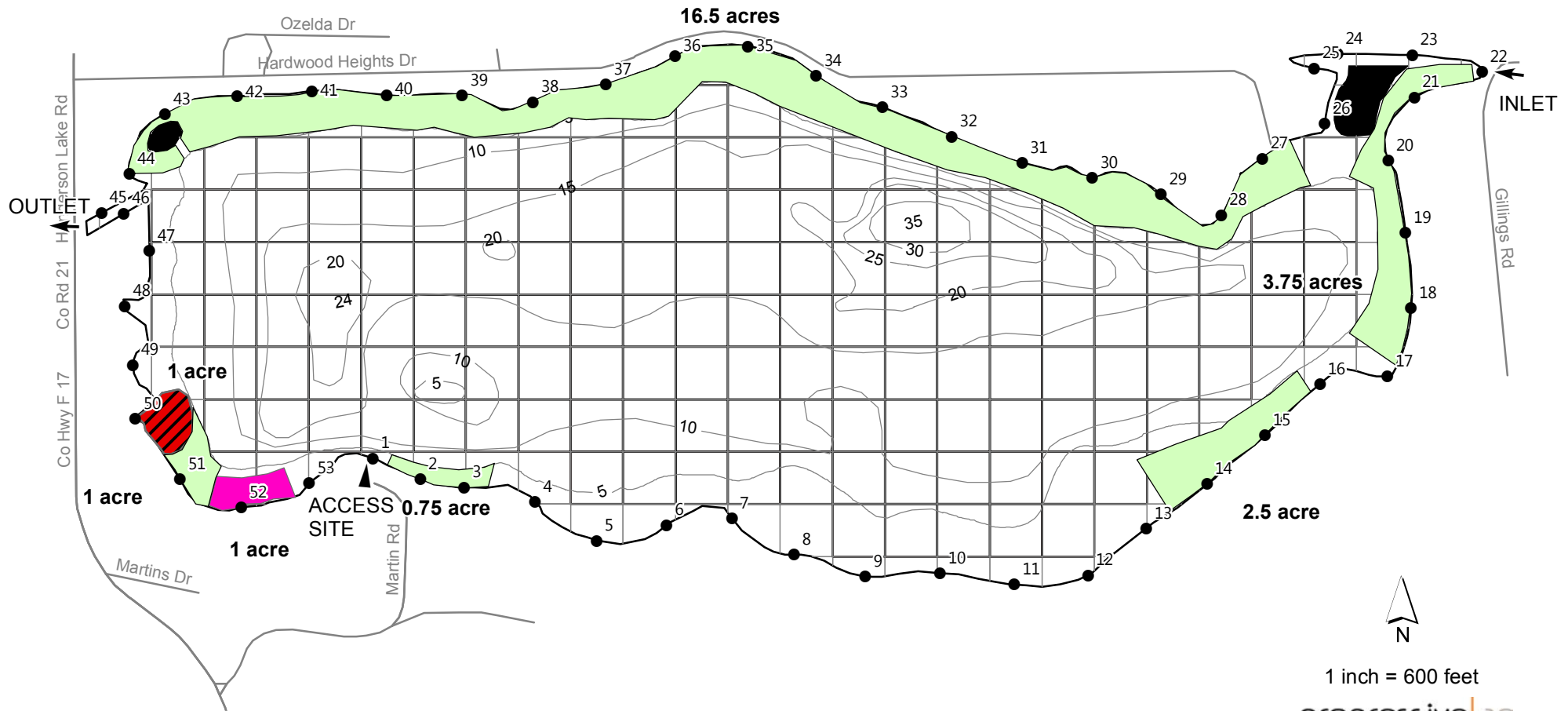
1 inch = 600 feet  
 progressive|ae

# HARDWOOD LAKE OGEMAW COUNTY, MICHIGAN AUGUST 16, 2018 TREATMENT MAP

□ = 1 ACRE

## Treatment

- Algae = 24.5 acres of nuisance filamentous algae w/CUSO4
- Triclopyr Liquid = 1 acre of non-native milfoil w/Navitrol liquid @ 3 gal./acre
- Clipper/Cutrine Ultra = 1 acre of starry stonewort w/flumioxazin @ 150 ppb plus chelated copper ethanolamine complex



1 inch = 600 feet

progressive|ae

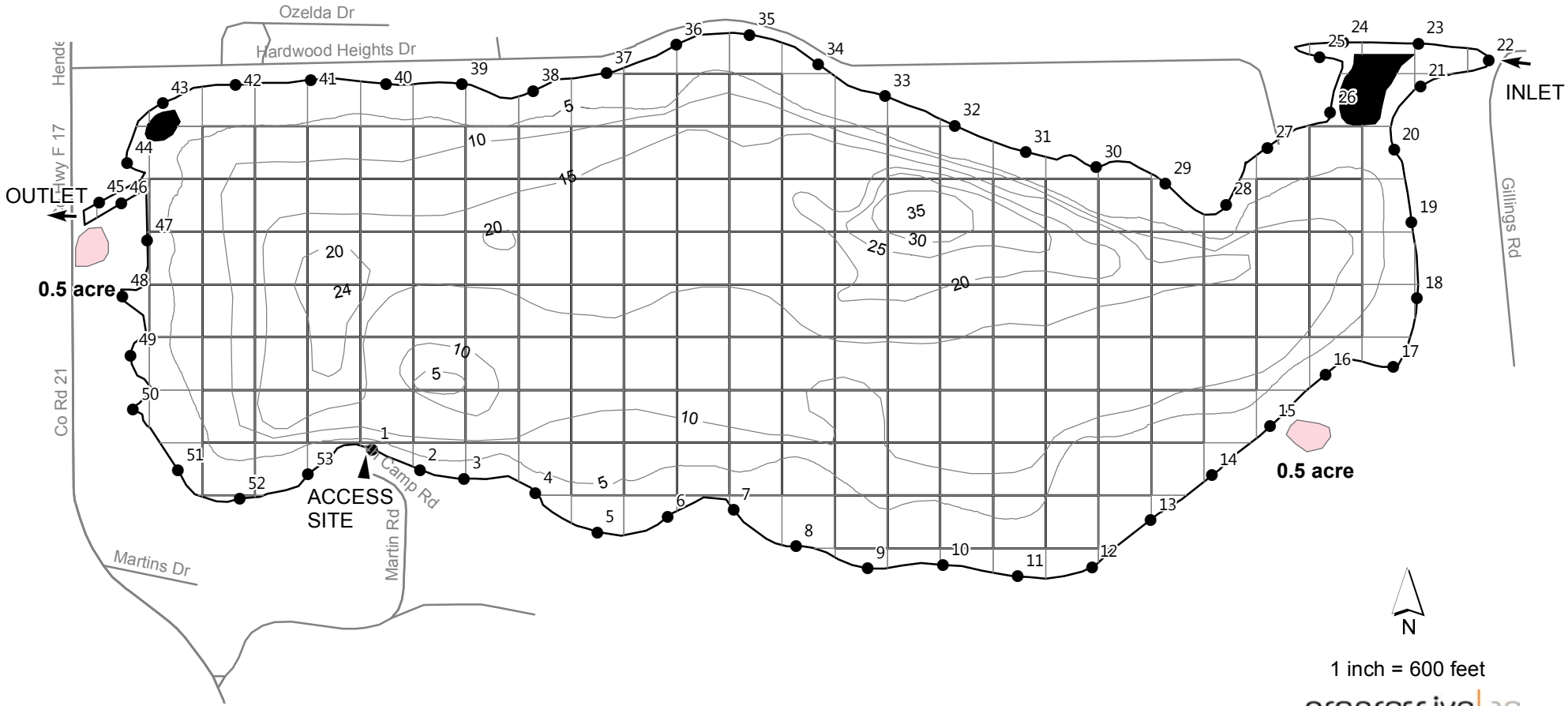
TOTAL LAKE AREA = 182 ACRES  
 REVISION DATE: FEBRUARY, 2018  
 DEPTH CONTOUR SOURCE - MICHIGAN CONSERVATION DEPARTMENT 1943.

# HARDWOOD LAKE OGEMAW COUNTY, MICHIGAN SEPTEMBER 10, 2018 TREATMENT MAP

□ = 1 ACRE

## Treatment

- Phragmites Control = 1 acre of non-native Phragmites w/Imazapyr/Glyphosate mix



TOTAL LAKE AREA = 182 ACRES  
 REVISION DATE: FEBRUARY, 2018  
 DEPTH CONTOUR SOURCE - MICHIGAN CONSERVATION DEPARTMENT 1943.

progressive|ae