

Date: 5-17-12

Crew: PTH, BMH

Weather: SUNNY, 49°F

H<sub>2</sub>O = 61°F

**Plant Names**

- 1 E. Milfoil
- 2 Curly leaf pndwd
- 3 Chara
- 4 Thinleaf pndwd
- 5 Flatstem pndwd
- 6 Robbins pndwd
- 7 Variable pndwd
- 8 Whitestem pndwd
- 9 Richardsons pndwd
- 10 Illinois pndwd
- 11 Large leaf pndwd
- 12 American pndwd
- 13 Floating leaf pndwd
- 14 Water stargrass
- 15 Wild celery
- 16 Sagittaria
- 17 Northern milfoil
- 18 M. verticillatum
- 19 M. heterophyllum
- 20 Coontail
- 21 Elodea
- 22 Utricularia vulgaris
- 23 Bladderwort-mini
- 24 Buttercup
- 25 Naiad
- 26 Brittle naiad
- 27 Sago pondweed
- 30 Nymphaea
- 31 Nuphar
- 32 Brasenia
- 33 Lemna minor
- 34 Spirodella
- 35 Watermeal
- 36 Arrowhead
- 37 Pickerelweed
- 38 Arrow arum
- 39 Cattails
- 40 Bulrushes
- 41 Iris
- 42 Swamp loosestrife
- 43 Purple loosestrife

**Density**

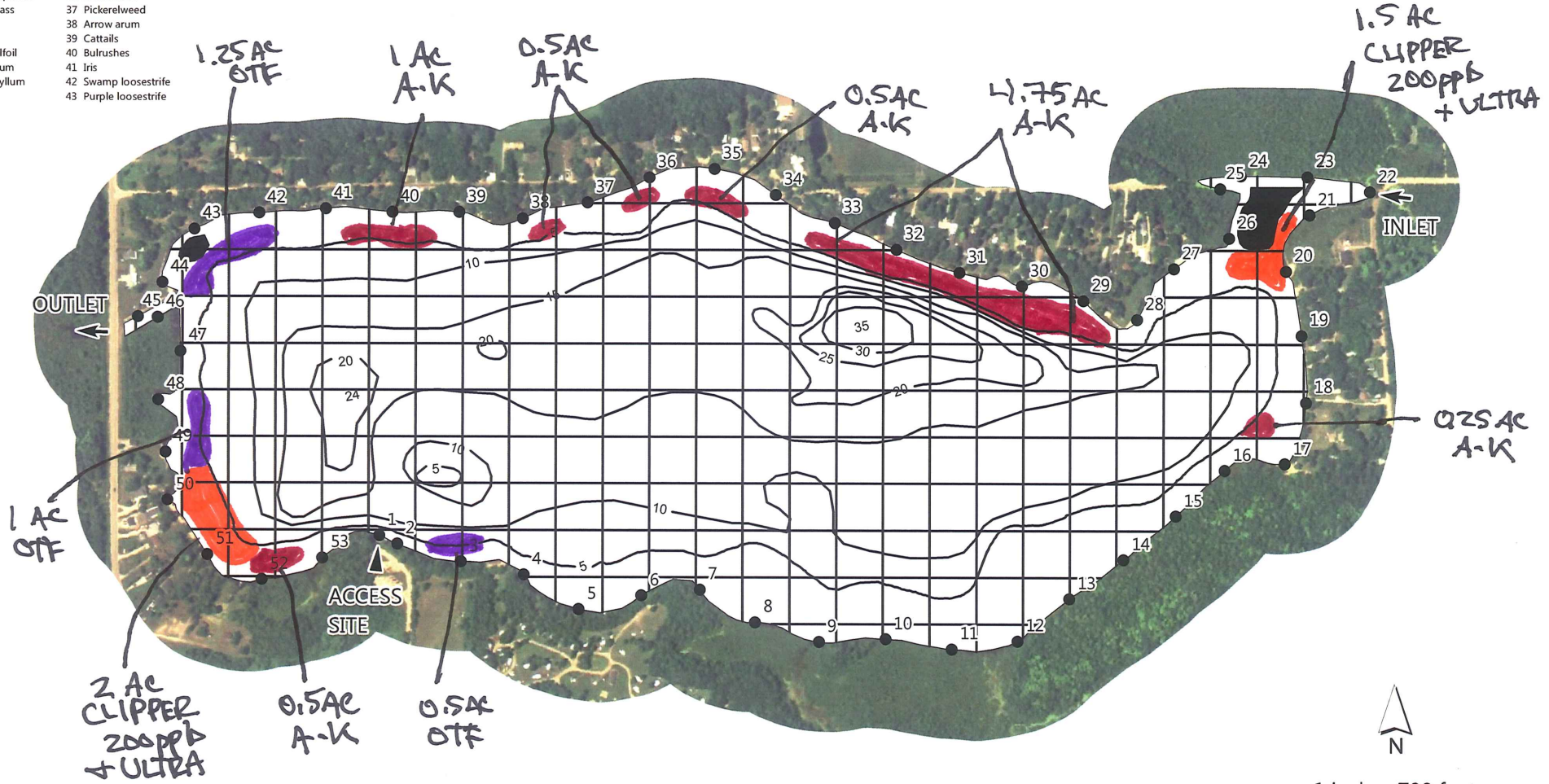
- a Found
- b Sparse
- c Common
- d Dense

**HARDWOOD LAKE**  
**OGEMAW COUNTY, MICHIGAN**  
**AQUATIC PLANT SURVEY MAP**  
**182 ACRES**

□ = 1 ACRE

- = 2.75 AC RENOVATE OTF
- = 3.5 AC CLIPPER @ 200ppb
- = 7.5 AC AQUATHOL -K FOR EXOTICS

Notes:



1 inch = 700 feet

progressive|ae

1811 4 Mile Rd NE  
 Grand Rapids, MI 49525  
 616 361 2664 OFFICE  
 616 361 1493 FAX  
 www.progressiveae.com